

Pinedale Estates DWID Source Water Protection Plan



Arizona Department of Environmental Quality (ADEQ)'s Source Water Protection (SWP) Program recently completed the SWP Plan for the Pinedale Estates DWID water system. The purpose of the SWP Plan is to protect the community's drinking water from contamination. Any potential source of contamination within one-half mile of your drinking water wells are of the greatest concern since they can most easily become a risk to human health. The following recommendations from the SWP Plan will help ensure that the community's drinking water remains protected for many years to come.

Recommendations for Neighbors

Speak with your neighborhood group to:

Set maintenance schedules for inspecting and pumping septic tanks in the area.

Encourage residents to scoop, bag and place pet waste in the trash for proper disposal. If left on the ground, contaminants in pet waste could potentially leach into the groundwater. And, few residential septic systems are designed to handle pet waste.

Collect automotive fluids for proper storage and disposal. Automotive fluids should be stored in containers designed for each specific type of fluid. Most automotive fluids can be disposed of at local auto parts stores and household hazardous disposal facilities or events.

Encourage use of low-flow plumbing fixtures.

Recommendations for local Businesses

Speak with your local businesses to determine best management practices, which can significantly reduce the risk of contamination source water. This may include:

- Proper chemical storage and waste disposal

Recommendations for the Water Systems wells

The well is in a flood zone. Either install a new well outside the flood zone or upgrade the well to ensure it meets minimum ADEQ requirements for wells in the flood zone.

Install security lighting at the well site and conduct regular yard maintenance to control vegetation.

Work with local authorities to post signs:

- "This is a Drinking Water Protection Area" at the well site
- "Do Not Dump" signs next to Dobson Creek

Keep your SWP Plan up to date.

Update your plan every two to three years to account for land use changes. Review the SWP areas annually for changes in land use and potential sources of contamination.

Additional information and best management practices can be found in the Pinedale Estates DWID Source Water Protection Plan that ADEQ provided to the community.

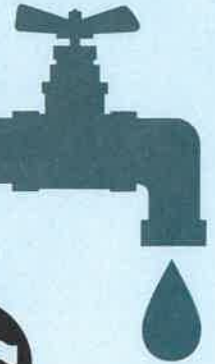
Source Water Protection Contact Information

David Burchard, MBA
 Hydrologist
 602-771-4298
Burchard.David@azdeq.gov

Victor Scherer, PG
 Hydrologist IV
 602-771-4597
Scherer.Victor@azdeq.gov

SOURCE WATER PROTECTION

PROTECT YOUR DRINKING WATER SOURCES FROM CONTAMINATION



SOURCES OF CONTAMINATION INCLUDE:



Septic Systems



Agriculture



Underground
Storage Tanks



Superfund Sites



Marinas &
Golf Courses

BENEFITS OF SOURCE WATER PROTECTION:

REDUCES Health Hazards

INCREASES Public Confidence

LOWERS Treatment and Cleanup Costs

HELPS with SOC/VOC sampling waivers

A SOURCE WATER PROTECTION PLAN

- Delineates a protection area around your well(s)
- Identifies potential sources of contamination
- Determines susceptibility from threats
- Develops Best Management Practices to protect your water source
- Implements protection activities and involve the community

THE PLAN IS VOLUNTARY
THERE IS NO
ADDITIONAL
REGULATION

FIND OUT HOW ADEQ CAN HELP (at no cost to you)

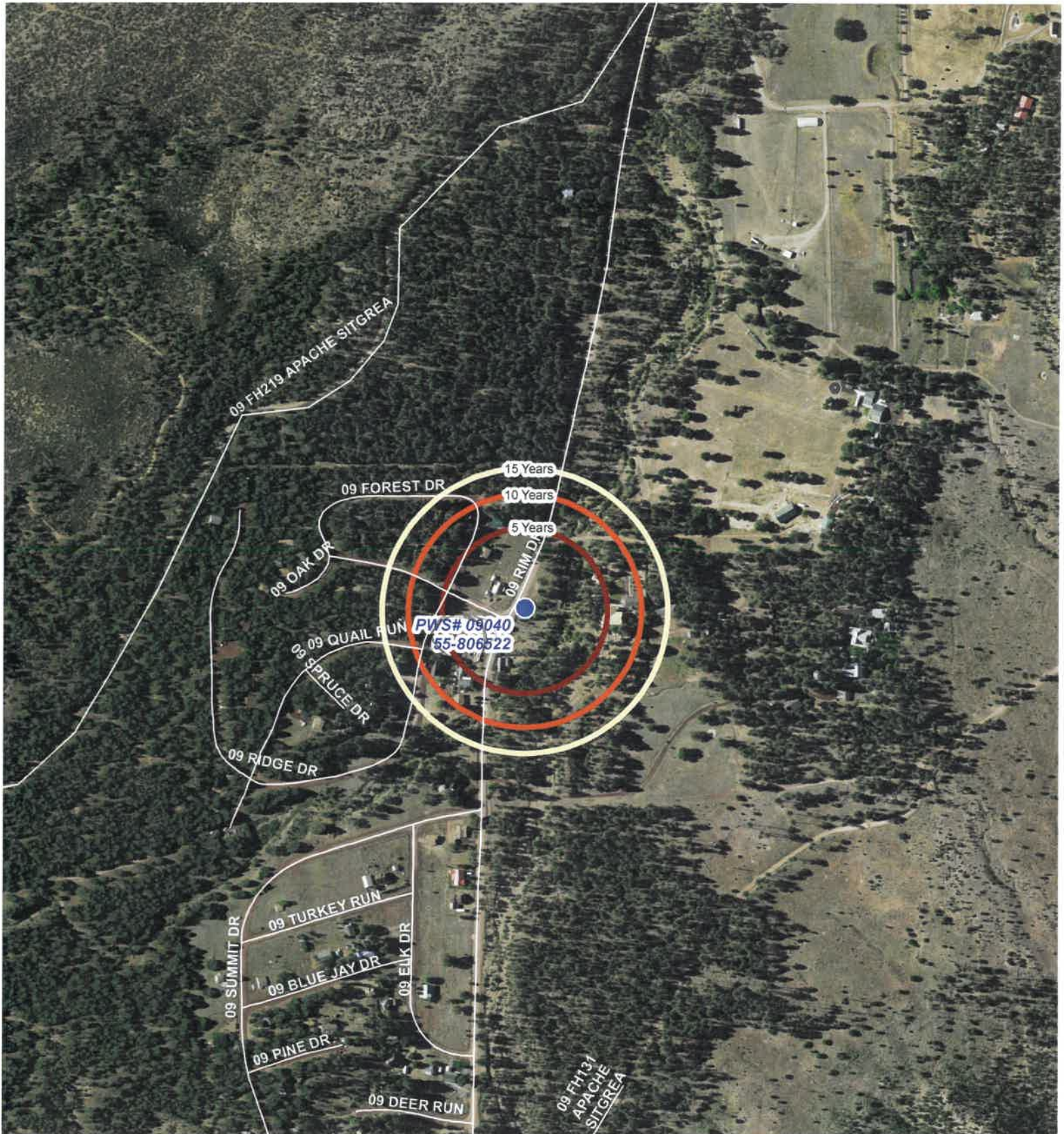
SMALL PUBLIC WATER SYSTEMS

We may be able to develop a Source Water Protection Plan for you

MEDIUM AND LARGE PUBLIC WATER SYSTEMS

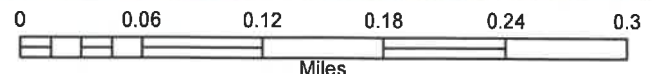
We can provide guidance and review your Source Water Protection Plan

SOURCE WATER PROTECTION AREAS
 Potential Contaminant Time-of-Travel
 (in years) to Reach Water Supply



Pinedale Estates
 Well #'s 55-806522
 Time-of-Travel
 5 years = 315 ft
 10 years = 445 ft
 15 years = 545 ft

● Active Well



1 in = 0.095 miles

This map is for general reference only and may not be all inclusive. More detailed information and specific locations can be obtained by contacting the Arizona Department of Environmental Quality.

Example: If a pollutant is spilled within the 5 year time-of-travel area, it is possible the contaminant may reach the well in 5 years or less.